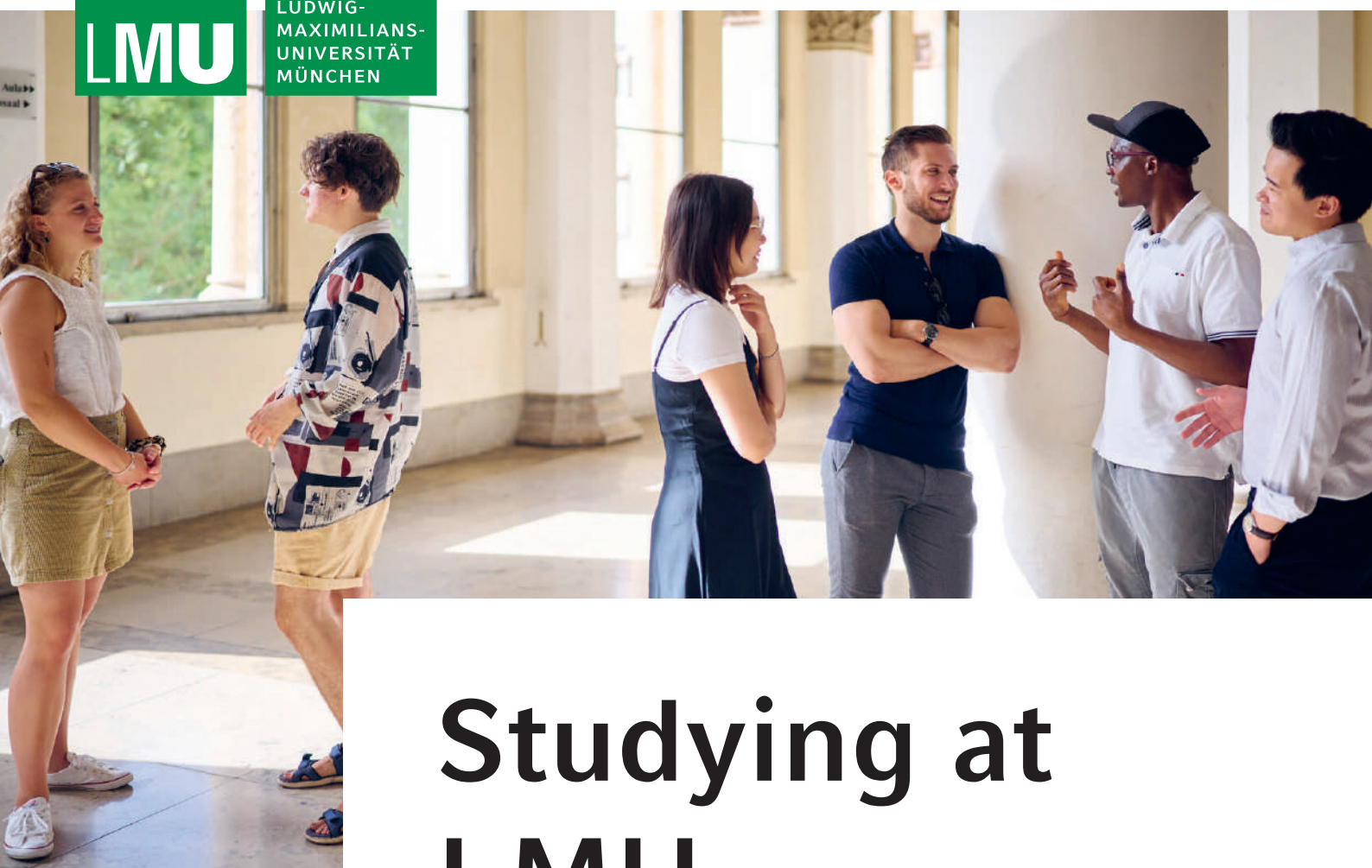


The logo consists of the letters 'LMU' in a white, bold, sans-serif font, centered within a solid green square.

LMU

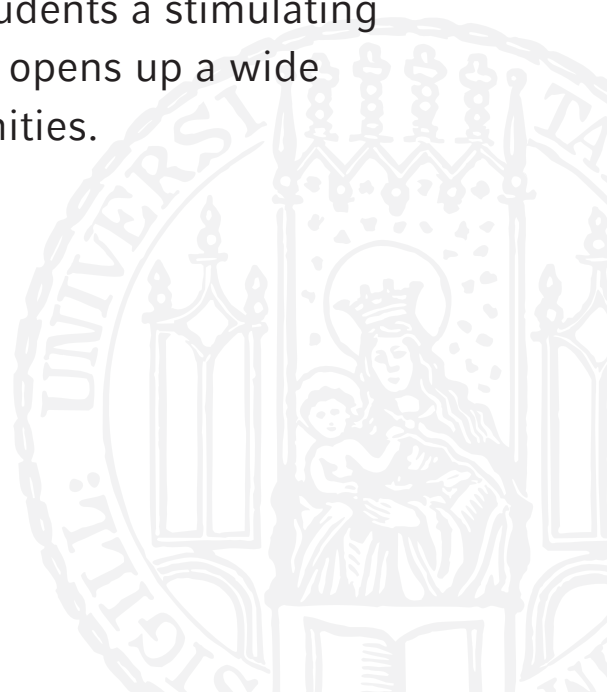
The text 'LUDWIG-MAXIMILIANS-UNIVERSITÄT MÜNCHEN' is written in a white, sans-serif font, stacked in three lines within a solid green square.

LUDWIG-
MAXIMILIANS-
UNIVERSITÄT
MÜNCHEN



Studying at LMU

As one of Europe's leading universities, Ludwig-Maximilians-Universität München is committed to offering students a stimulating academic education that opens up a wide range of career opportunities.





Historic site: The Auditorium Maximum (Audimax), where Thomas Mann, winner of the Nobel Prize for Literature in 1929, spoke for the last time in public in his homeland before emigrating from Germany in 1933 following the accession of the Nazi regime to power.

Wide choice of programs

The choice of subjects available to students at LMU covers the entire spectrum of academic disciplines. From art history to zoology, LMU's curriculum includes some 300 degree programs, which can be combined in a whole variety of ways. More than 500 exchange agreements with partnering institutions on all continents, together with the Munich Summer University program, make it possible to attend courses at LMU for shorter periods. This wide range of opportunities opens up an equally diverse range of academic and professional perspectives.

→ www.lmu.de/en/study/all-degrees-and-programs

Knowledge and values

LMU's primary task is the education of young people. Illuminating issues from various angles, the University strives to provide a fully rounded education by imparting technical competence and social skills, and instilling a lively historical awareness and a commitment to human values.

In this spirit, LMU upholds the legacy of the White Rose movement, a group of students who actively resisted Nazi ideology during the Second World War.

Research-oriented study programs

The know-how and creative intelligence of LMU's scholars and scientists—from doctoral students to internationally recognized leaders in their fields—form the basis for the University's excellent research record, as reflected in its standing in national and international university rankings. The University's first Nobel Laureate was Wilhelm Röntgen, who received the honor in 1901 for his discovery of X-rays.

As one of Europe's leading research universities, LMU sets out to inspire students with enthusiasm for science and scholarship, and the critical thinking they demand. Hence, study programs at LMU are closely integrated with ongoing research at all stages of academic education. For LMU, high-quality academic teaching consists primarily in imparting scientifically sound judgment on the basis of excellent research.

Exciting perspectives

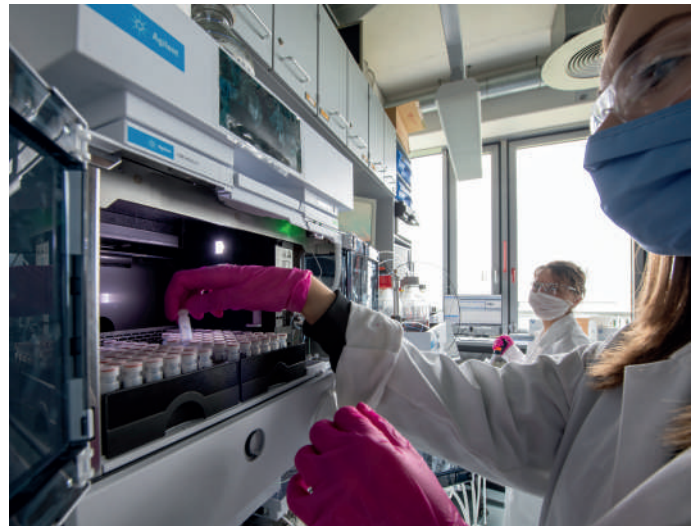
The future of every university depends on the creativity of the young talent it attracts and nurtures. LMU does its utmost to provide its students with a top-class learning environment and create the best possible research infrastructure for early-career researchers.

A degree from LMU also opens up exciting prospects in fields beyond the academic sphere. The University has built up a network of relationships with research institutions, other universities, foundations, and globally operating companies. As a thriving media and technology hub and a cultural center of excellence, Munich operating companies a wide range of career prospects for LMU graduates.

LMU Career Services help prepare students for the world of work as they embark on a career, bringing them into contact with potential employers.



A degree from LMU also opens up exciting prospects in fields beyond the academic sphere.



Research at the center—right from the start.

Inspiring setting

Poet Rainer Maria Rilke and physicist Max Planck and—in more recent times—Paralympics gold medalist Verena Bentele, are among the many well-known individuals whose studies at LMU provided the inspiration for their subsequent careers and influence, and who enriched the University with their ideas.

Vibrant student life and personal assistance for students from abroad

Extracurricular activities at LMU range from big band to orchestra, from the dramatic arts to debating societies, from groups dedicated to specific academic disciplines or aspects of education policy to sports teams. Opportunities to pursue your individual interests and talents are endless. To get international students off to a good start and provide personal assistance during their stay, LMU Munich, in cooperation with numerous partners, offers a broad range of services, extending from finding accommodation to familiarization and integration programs and language courses.

→ www.lmu.de/en/workspace-for-students/international-student-guide

A world of contacts and exchanges

Campus life at LMU is distinctly international: 21% of all students come from abroad. The network of LMU's international relations spans the globe. The University has entered into formal partnerships with almost 600 institutions the world over, which provide countless openings for contacts and exchanges.

→ www.lmu.de/en/about-lmu/international-network

A university with a rich history



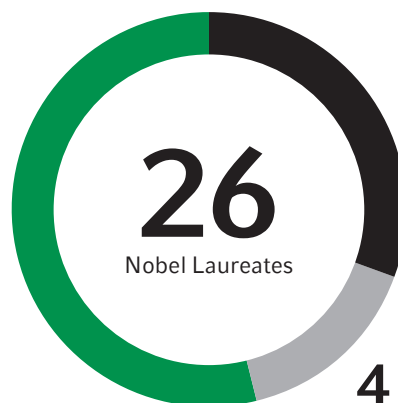
550

years of tradition in
higher education and
research



14

full professors



8

researchers who
qualified as professors
(*Habilitation*) at LMU

4

received their doctoral
degree at LMU

Academic diversity

321

degree programs

54,616

students

840

professors

6.241

academic staff members
(full-time equivalents)

18

faculties

International networks

10,200 international
students from

140

countries

cooperations with nearly

600

partner institutions
worldwide

1,000 students from more than

80

countries per year at
LMU Munich's International
Summer University

Rich and varied student life

more than

30

independent student societies with social,
political, and academic orientations

some

20

student choirs, bands, and orchestras

more than

100

sporting activities organized by the
Central Association for University Sports
Munich (*Zentraler Hochschulsport
München*), the largest body of its kind in
Germany

First-rate infrastructure

University Library

→ located at 15 sites, holding some 5 million books and
other media

Family-friendly environment

→ 21 day-care facilities with more than **500 places** for
the children of Munich students, run by the Student
Services Organization (*Studentenwerk*)

Dining halls and cafeterias

→ 15 dining halls and cafeterias located on various
campuses

In the heart of Munich

→ close to the English Garden, one of the largest parks
in the world

Highly attractive surroundings

→ numerous recreation opportunities, e.g. nearby Alps,
scenic lakes and royal palaces



→ www.lmu.de/en/study

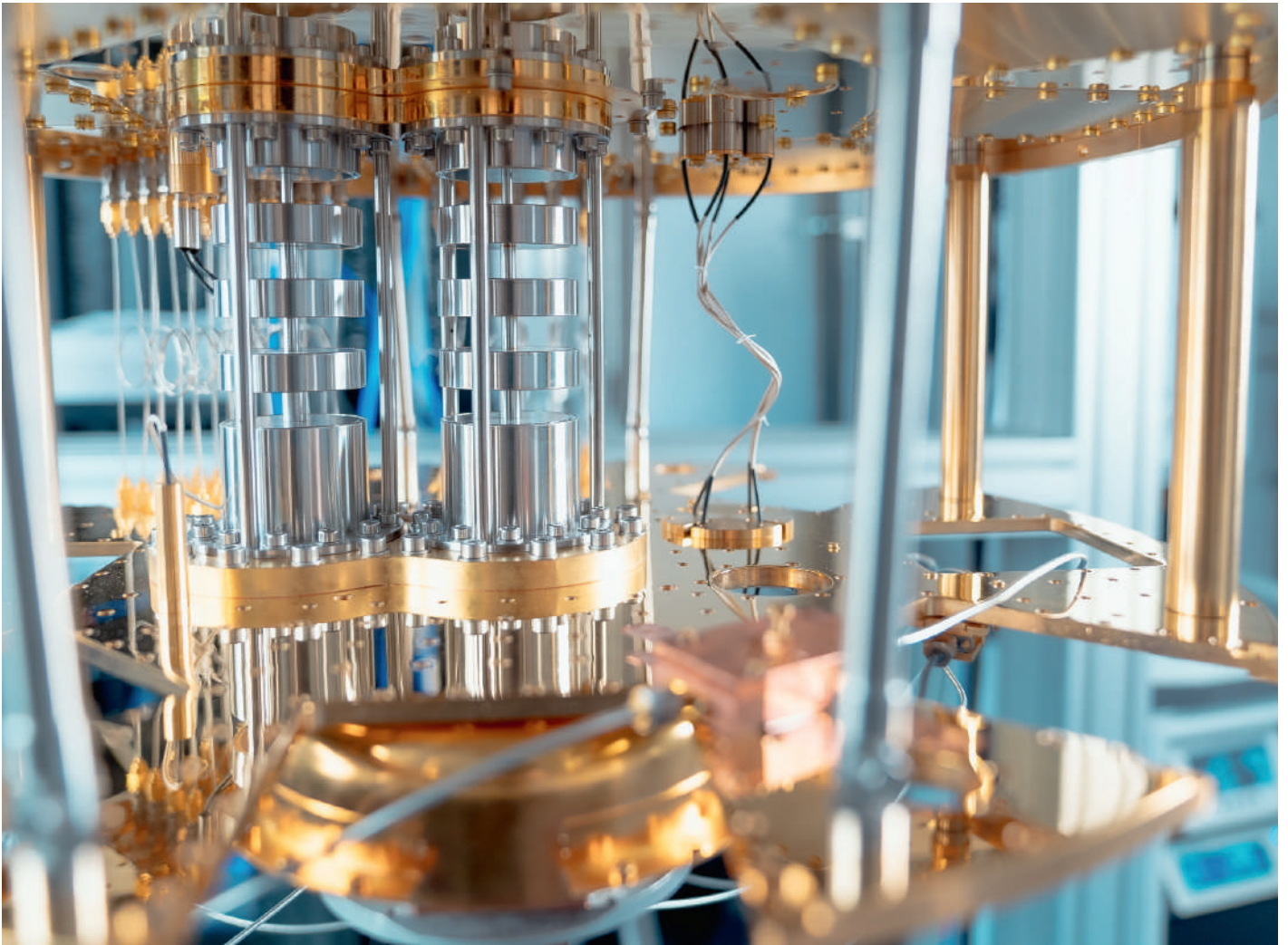
Ludwig-Maximilians-Universität München
Geschwister-Scholl-Platz 1
80539 München



Research

LMU is one of Europe's leading research universities. With its highly diversified array of disciplines, it has outstanding potential for pioneering research.





Researchers at LMU explore the phenomena of the quantum world and their applications to pressing challenges of our time.

Internationally recognized for excellence

The expertise and dedication of its faculty and staff are the basis for LMU's distinguished record of accomplishments in research, as was further confirmed by the University's performance in all three phases of the German Excellence Competition designed to promote top-level university research. Thus, LMU was awarded permanent funding as a University of Excellence in 2019.

→ www.lmu.de/en/about-lmu/lmu-at-a-glance/awards/excellence-strategy

Pioneering research across disciplines

LMU is one of Europe's leading research universities. With its highly diversified array of disciplines, it has outstanding potential for pioneering research—from bioengineering to artificial intelligence to quantum science. The diverse array of subjects covered at

LMU—from humanities and cultural studies to legal and social sciences, from economics to medicine and natural sciences—is an ideal basis for interdisciplinary cooperation. These disciplines are organized in 18 faculties and cooperate in diverse research centers that promote collaboration in and between faculties.

An attractive research environment

At LMU, faculty and visiting researchers from all over the world find state-of-the-art facilities and conditions appropriate to their needs—whether they focus on individual disciplines or work in multidisciplinary networks. LMU forms an integral part of Munich's vibrant scientific and technological, commercial and cultural life. The University possesses excellent infrastructure for innovative basic research and the translation of its insights into economic, social, and technological innovations. LMU offers a variety of advisory services for doctoral students, junior researchers, and established investigators. These include support schemes offered by the Dual Career Service, coaching in personal development and assistance with the acquisition of third-party funding for research projects and research-based spin-offs.

→ www.lmu.de/en/about-lmu/working-at-lmu

Nurturing early-career researchers

LMU offers early-career researchers excellent conditions for their research projects and individual career development. From doctoral thesis projects in a wide variety of disciplines—whether supervised by a single mentor or as part of a structured program—to targeted support measures for the postdoc stage to the tenure-track model, which LMU has successfully pursued for many years. In doing so, LMU places a strong focus on supporting early independence and promoting international cooperation and academic networking.

→ www.lmu.de/academic-careers

→ www.en.graduatecenter.lmu.de

Research connections

Because intellectual exchange and collaboration across disciplinary and national boundaries are the lifeblood of modern research, LMU maintains a dense network of contacts with other universities, research institutes and businesses. Among its local partners are the Technical University of Munich, globally operating firms and, in particular, the institutes run by the Max Planck Society and the Helmholtz Society. In addition, LMU has entered into strategic research collaborations with internationally renowned universities, such as the University of Cambridge, the University of California at Berkeley, and leading universities in China within the LMU-China Academic Network (LMU-ChAN).



The University Library holds some 5 million books and other media. This also includes the state-of-the-art Philologicum, LMU's library for the humanities.



LMU offers attractive career opportunities and support services for early-career researchers.

A forum for academic exchange


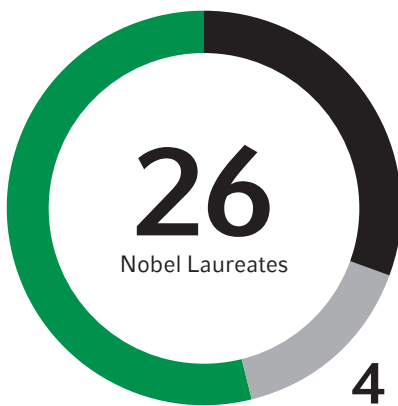
LMU's Center for Advanced Studies (CAS) serves faculty members, staff and students as a platform for interdisciplinary exchange. The Center also organizes events in which the latest research findings are made accessible to the general public. In addition to a broad range of activities that promote multiple forms of cooperation in research, the Center actively supports the integration of visiting researchers into the academic life of LMU.

→ www.en.cas.lmu.de

Research news across all channels

LMU uses its own media channels to keep the worldwide public up to date on the latest research. Up-to-the-minute news is published on the University's international website and its social media channels. LMU's newsletter and its dedicated research magazine *Einsichten* provide detailed insights into LMU's exciting world of research.

→ www.lmu.de/en/newsroom

Outstanding research record		Awards for achievement in research		
Involved in 39 Collaborative Research Centers funded by the German Research Foundation (DFG)		→ 11 coordinated by LMU		
Partner in 199 projects financed by the EU Framework Program Horizon Europe (2021-2027)				
#1 #8 in Germany in Europe When it comes to acquiring the European Research Council's highly endowed grants, LMU ranks among the top universities.				
		21 Leibniz Prizes	5 Alexander von Humboldt Professorships	259 Grants by the European Research Council

Outstanding performance in the German Excellence Strategy

7 Clusters of Excellence	Renewal proposals (since 2019)		New proposals (starting in 2026)	
	→ MCQST: Munich Center for Quantum Science and Technology → ORIGINS: From the Origin of the Universe to the First Building Blocks of Life → SyNergy: Munich Cluster for Systems Neurology → e-conversion: Fundamentals of Energy Conversion Processes		→ Cross-Cultural Philology: New Perspectives on Premodern Textualities → NUCLEATE: Cluster for Nucleic Acid Sciences and Technologies → BioSystemM: Biosystems Design Munich	

Strategy program
LMUexcellent: A New Perspective

Faculty and staff

840 professors	6,241 academic staff members (full-time equivalents)	1,179 doctoral degrees per year	112 <i>Habilitations</i> per year
--------------------------	---	---	---