



LUDWIG-  
MAXIMILIANS-  
UNIVERSITÄT  
MÜNCHEN

Executive Master of  
**HUMAN RESOURCE MANAGEMENT**



# Executive Master of Human Resource Management: Lehrevaluation

Wintersemester 2015/2016

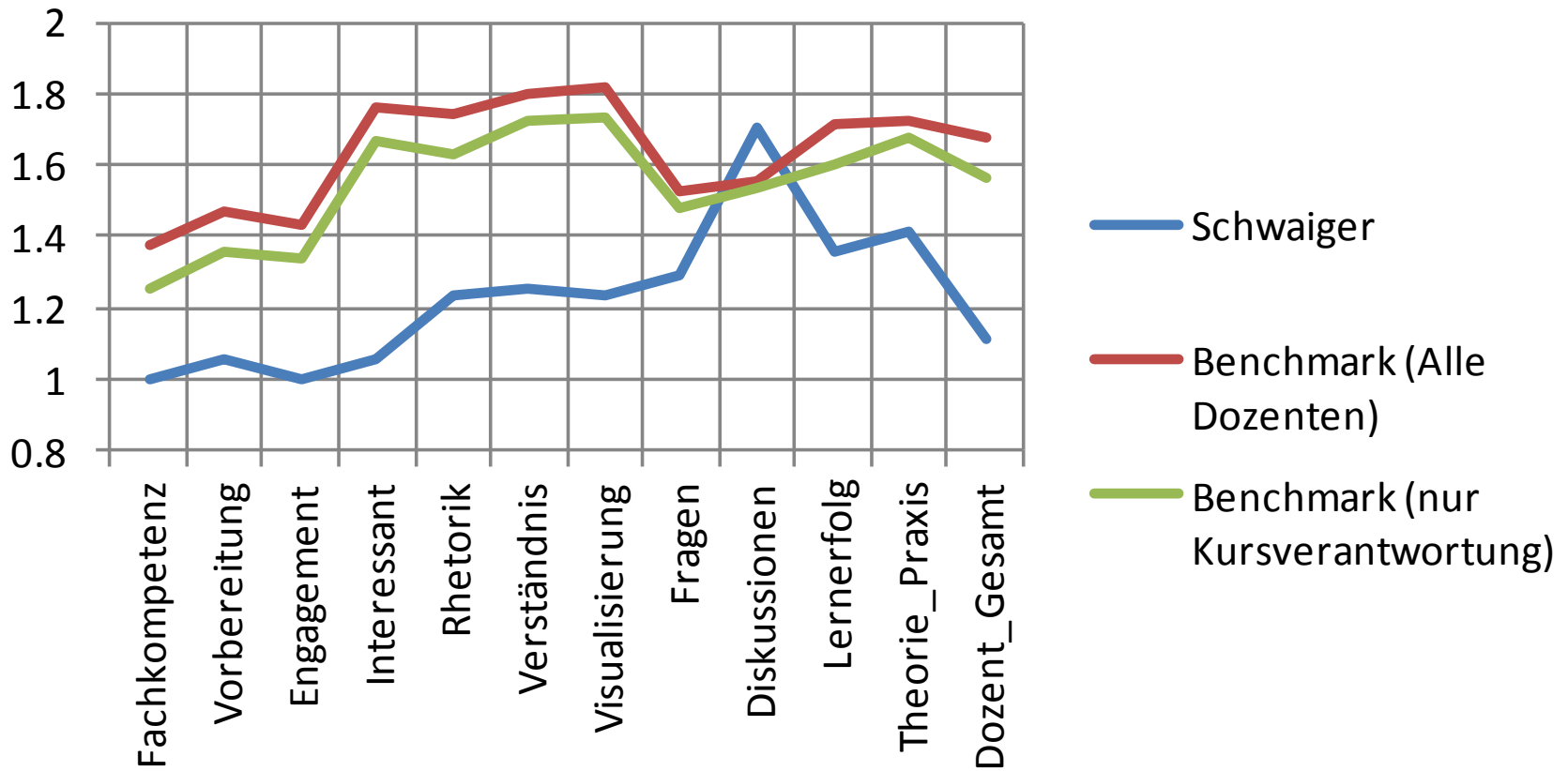
Prof. Dr. Schwaiger



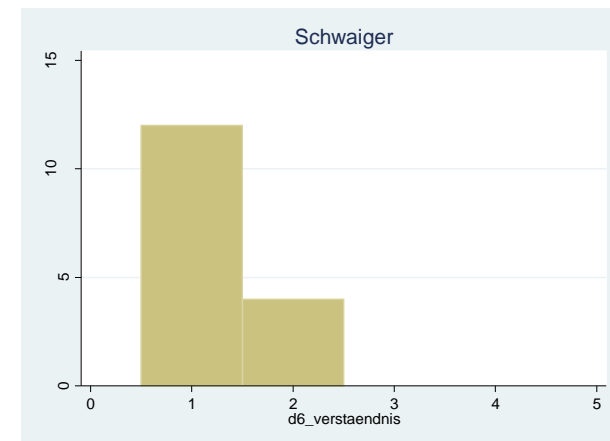
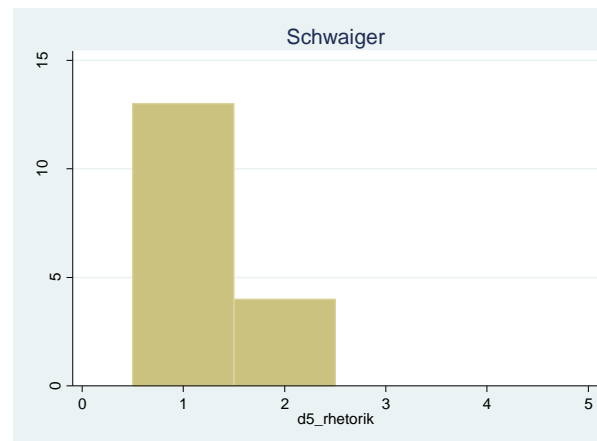
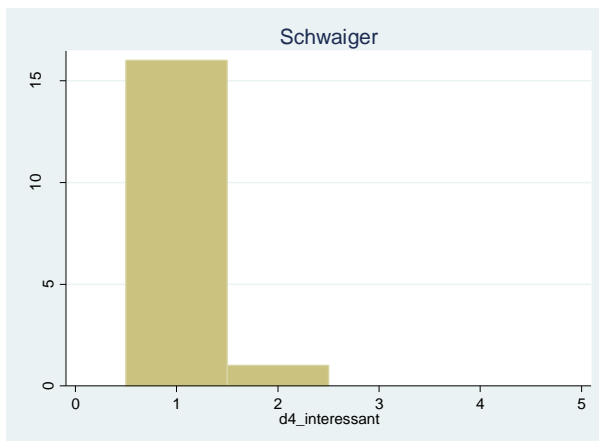
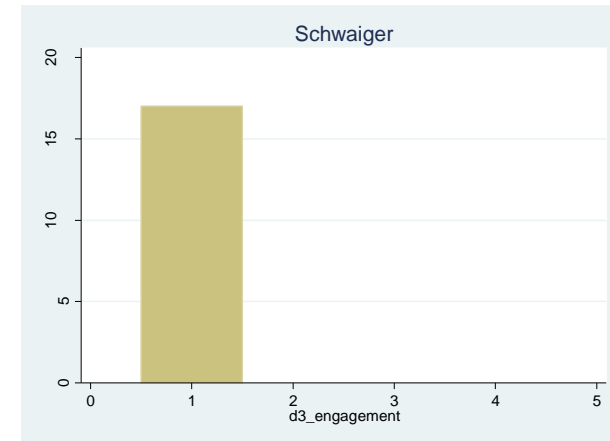
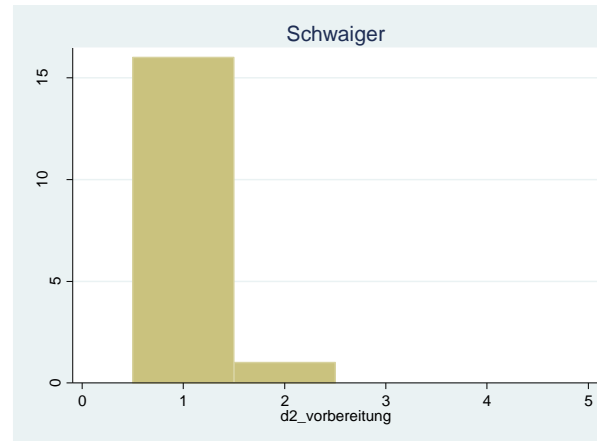
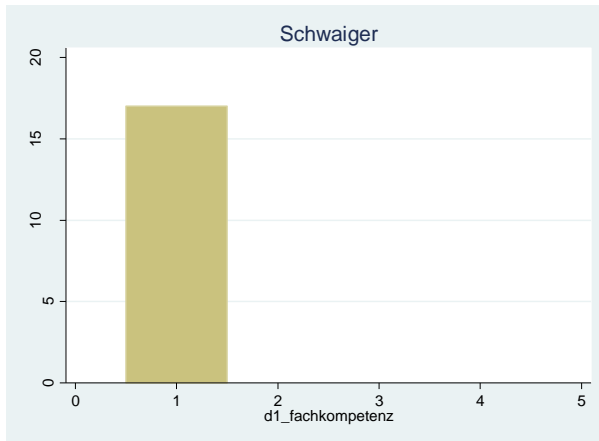
# Bewertung des Dozenten (1 = sehr gut, 5 = mangelhaft)



## Schwaiger



# Häufigkeitsverteilung für den Dozenten I (1 = sehr gut, 5 = mangelhaft)



# Häufigkeitsverteilung für den Dozenten II (1 = sehr gut, 5 = mangelhaft)

