

ICON-Veterinary Pathology Laboratories and Core-facility service

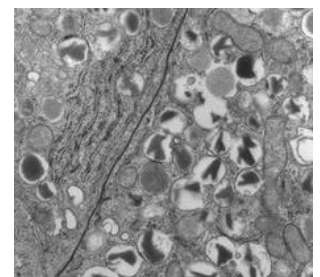
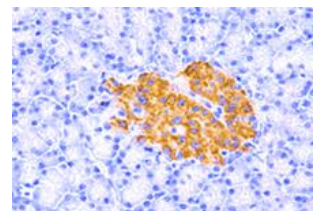
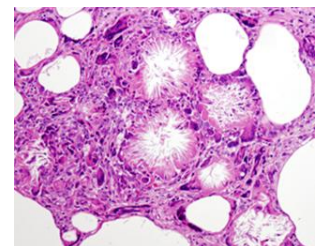
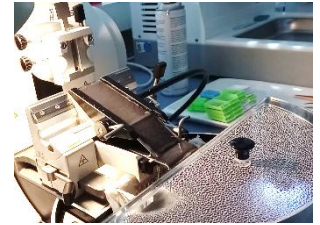
The **ICON-Pathology Lab** of the **Institute of Veterinary Pathology of the LMU** offers **ICON** members scientific cooperations in tissue-based translational research projects. We provide broad expertise in pathological analysis, including **necropsies** (all mammal species), **qualitative (diagnostic) pathology**, (light-microscopic) histomorphological analysis (**cryo-, paraffin- and plastic-histology**), **immunohistochemistry**, **in-situ-hybridization**, **quantitative morphological analysis** (stereology), **histomorphometrical analysis**, **3D-Laser-light-sheet microscopy (LSFM)** and **electron microscopy** (transmission electron microscopy-**TEM** and scanning electron microscopy-**SEM**).

We support cooperation partners in experimental design, planning of necropsies and sampling of defined tissue specimen, adequate sample processing for downstream analyses, assessment of quantitative histomorphological and ultrastructural parameters, imaging and publication of results.

➤ For **project cooperation requests and initial project meetings**, please contact **Dr. Sonja Fiedler**

The **Core-facility service** of the **ICON-Pathology Lab** **provides access to lab-space and technical equipment** for histological analyses **for own use by ICON-members** after initial **training by our staff** (every two weeks). Operating instructions for the different devices that are provided for use by **ICON-members** can be downloaded from the links below.

- Cryo-histology
- Paraffin-embedding of tissue samples
- Preparation of histological slides for light microscopy
- Immunohistochemistry
- Staining of slides with standard stains
- Microscopes for quality control are provided
- Digital scanning of slides



We use the PPMS system to **book training sessions and lab-time** by ICON users and payment of the service.

- If the PPMS system is not installed yet for the Pathology Core facility, or does not work properly, please **contact Mrs. Sandra Aumiller or Mrs. Lisa Pichl** (technical staff) **for technical training and/or booking of lab-time.**

Staff, contact details, imprint

Dr. Sonja Fiedler

Scientific head of the ICON-Veterinary Pathology Laboratories at ICON

E-mail: Sonja.Fiedler@patho.vetmed.uni-muenchen.de

Phone: +49 89 21803950

Sandra Aumiller

Technical staff

E-mail: aumiller@patho.vetmed.uni-muenchen.de

Phone: +49 89 2180 2966

Lisa Pichl

Technical staff

E-mail: pichl@patho.vetmed.uni-muenchen.de

Phone: +49 89 2180 6332

Prof. Dr. Andreas Parzefall

PI

E-mail: andreas.parzefall@lmu.de

Phone: +49 89 2180 2539 or -2530 (secretary)

ICON-Veterinary Pathology Laboratory and Core-facility

Rooms S01.008 & S01.010

Feodor-Lynen-Straße 19

81377 München

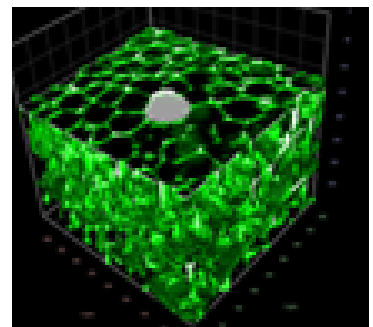
Institute for Veterinary Pathology

Center for Clinical Veterinary Medicine

Ludwig-Maximilians-Universität München

Veterinärstrasse 13

80539 Munich



ICON-Pathology-Core-facility service

Terms of use and prices

General considerations, technical devices and lab-space

The **ICON-Pathology Lab** of the **Institute of Veterinary Pathology of the LMU** offers **ICON** members a **Core-facility service** by providing **lab-space** and **technical equipment** for histological analyses **for own use by ICON-members** after initial **training by the Pathology-Core-facility staff**.

- The **ICON-Pathology Lab** is situated in **room S01.008** and **S01.010**
- The data-analysis office/work-place is located in **room S03.042**

The following devices can be booked/used, as soon as they are installed.

- **Cryo-histology**
- **Paraffin-processing and embedding station**
- **Microtome for sectioning of paraffin blocks and equipment for preparation of histological slides for light microscopy, including staining of slides with standard stains (HE, Pikrosiriusred, Giemsa, PAS-reaction)**
- **Microscopes for quality control are provided**
- **Digital scanning of slides**
- **Additionally, labspace for preparation of immunohistochemical stainings of slides can be provided.**

Booking of devices, lab space and training

- We use the **PPMS** system to book training sessions and lab-time by **ICON** users and payment of the service.
- If the **PPMS** system is not installed yet or does not work properly, please contact **Mrs. Sandra Aumiller** or **Mrs. Lisa Pichl** (technical staff) for technical training and/or booking of lab-time.
- **Training sessions for ICON-users will be held approximately twice per month after registration (by arrangement – contact Mrs. Sandra Aumiller or Mrs. Lisa Pichl).**

Terms of use

- **All users must undergo a training** (by the Core-facility staff) for the booked devices and activities **in advance** and confirm the instructions about all safety-relevant issues (work-safety, infection protection, handling of biological substances, genetically modified organisms, fire-protection, behavior in the event of technical malfunctions or of danger, fire, earthquake, terror, etc.) by signature.
- **Unauthorized persons are prohibited from entering the laboratories and using the equipment.**
- The devices, workstations and equipment provided by Core-facility must be handled with care. Before starting work, all devices and equipment provided must be checked for completeness, functionality and safety as well as for damage and soiling.
- After completion of the work (and at appropriate intervals in the case of longer work), all equipment must be cleaned and disinfected, if appropriate, using suitable and approved products. Used materials/chemicals must be replaced. **Leave the work-space and the devices clean and tidy.**
- Obey the rules of good-laboratory practice.
- Any faults or damage/functional failures must be reported immediately.
- Before starting work, users must sign in on a provided list and confirm that they have accepted the equipment, workstations and equipment parts provided in proper condition. Failure to do so may result in liability for damage/functional failures and soiling not reported in advance.
- Users are liable for all damage caused by improper handling and for the replacement of wearing parts.
- If these regulations are not observed, users may be excluded from further use of the Core facility service.
- **Any work on genetically modified organisms (GVO's) or related materials within the meaning of the German Genetic Engineering Safety Act (GenTG, GenTSV, etc.) and work on infectious materials must be announced in advance. After working on GVO's or potentially infectious materials, users must self-responsibly clean and disinfect the workspace appropriately, using accredited disinfection agents and detergents (provided by the users), according to the type of GVO's/vectors, transgenes, or infectious agents, respectively.**
- By using the Core facility service, users agree to these regulations.

Price list and payment

- Users must provide a complete billing address before commencing work and the usage fee is based on the devices used, the scope of use and the period of use.
- Any costs for consumables (unless provided by the user) incurred in addition to the usage fee shall also be borne by the user.
- Invoices are issued via the PPMS system or by invoice.
- The final price list will be published, as soon as it is available

Device/workspace	Costs
Cryo-histology (microtome & staining bench) *	8€ per hours or 40 € per ½ day
Paraffin-processing, embedding and blocking station*	~4 € per cassette / up to xx cassettes per run
Microtome for paraffin-sections*	8€ per hours or 40 € per ½ day
Staining bench for paraffin-sections	5€ per hour or 20 € per ½ day
Immunohistochemistry-lab*/**	5€ per hour or 20 € per day
Digital slide scanning	Brightfield/Fluorescence-imaging: to be announced soon (the scanner is not installed so far)
Project planning and consulting	Free of charge

* consumables must be paid by user (e.g. microtome blades, glass slides, etc.)

**materials have to be provided by the user (buffers, antibodies)