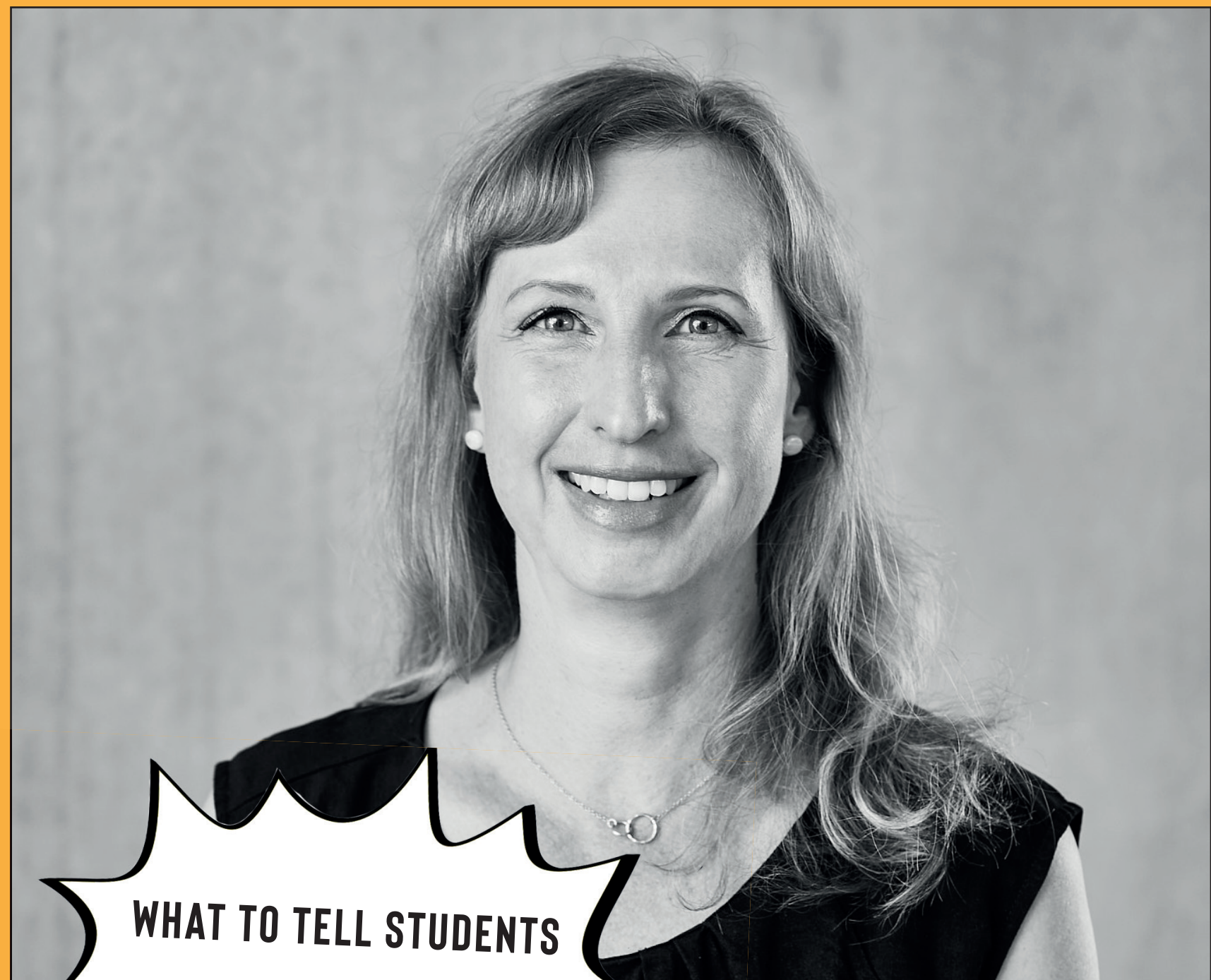


SERENA SCHWENKERT

ABOUT

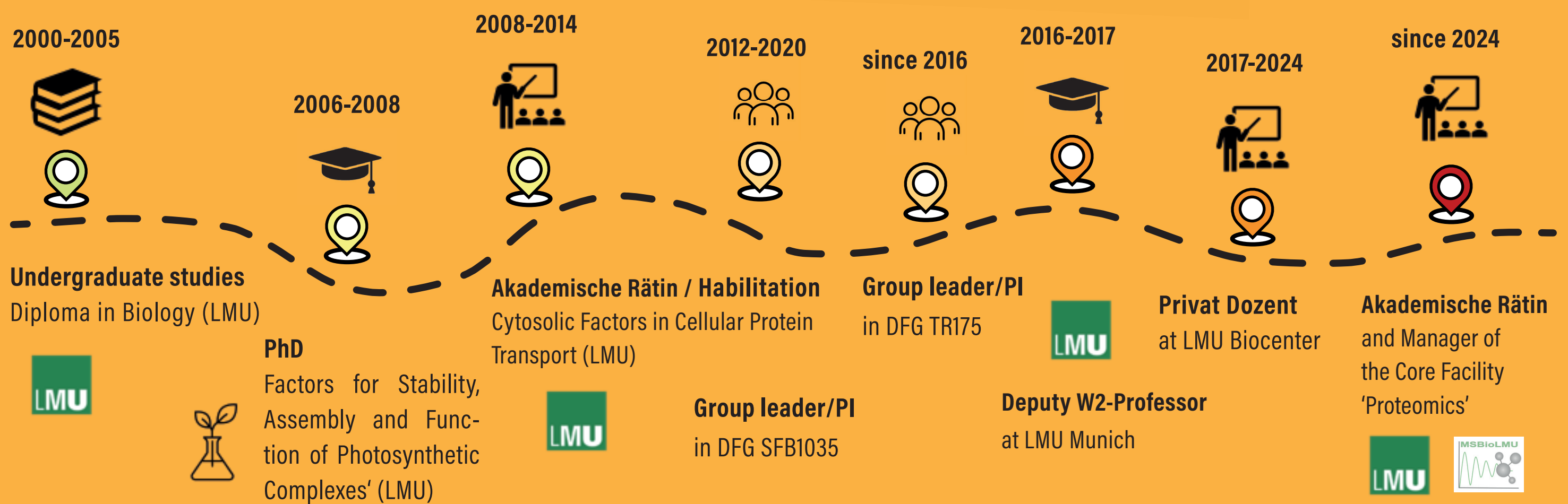
Serena Schwenkert is a biologist specializing in plant physiology and biochemistry. She works as a research associate at the Chair of Plant Molecular Biology and coordinates the proteomics core facility MSBioLMU at the Biocenter. Her research team investigates the transport of molecules across chloroplast membranes. In addition to examining the structure-function relationships of individual proteins, she aims to understand the roles of these transport processes in the context of plant acclimation to changing environments. Furthermore, she teaches in Bachelor and Master programs and is actively engaged in supporting early career postdocs.



WHAT TO TELL STUDENTS

*„Let your passion drive you,
appreciate the ride.“*

CV TIMELINE



KEY EXPERIENCE

When I was offered the opportunity to join the faculty's mass spectrometry facility, the task initially seemed different to my previous experience and a bit daunting. Despite the additional work and commitment required, I gladly accepted the challenge. This role provided an ideal alternative to a professorship, enabling me to continue my career in Munich. Coordinating the proteomics service has proven to be a perfect fit, allowing me to utilize my expertise in protein biochemistry while supporting a wide array of exciting projects within the faculty.

MAJOR SCIENTIFIC FINDING

Since my PhD my research focus was on plant organelles, especially on chloroplasts. Beside being the site of photosynthesis, many metabolites are produced within this organelle. In 2019 we identified the protein JASSY in the outer chloroplast membrane. JASSY exports a precursor of the plant phytohormone jasmonate, which was considered a missing link in jasmonate biosynthesis.

