

# CAROLIN HAUG

## ABOUT

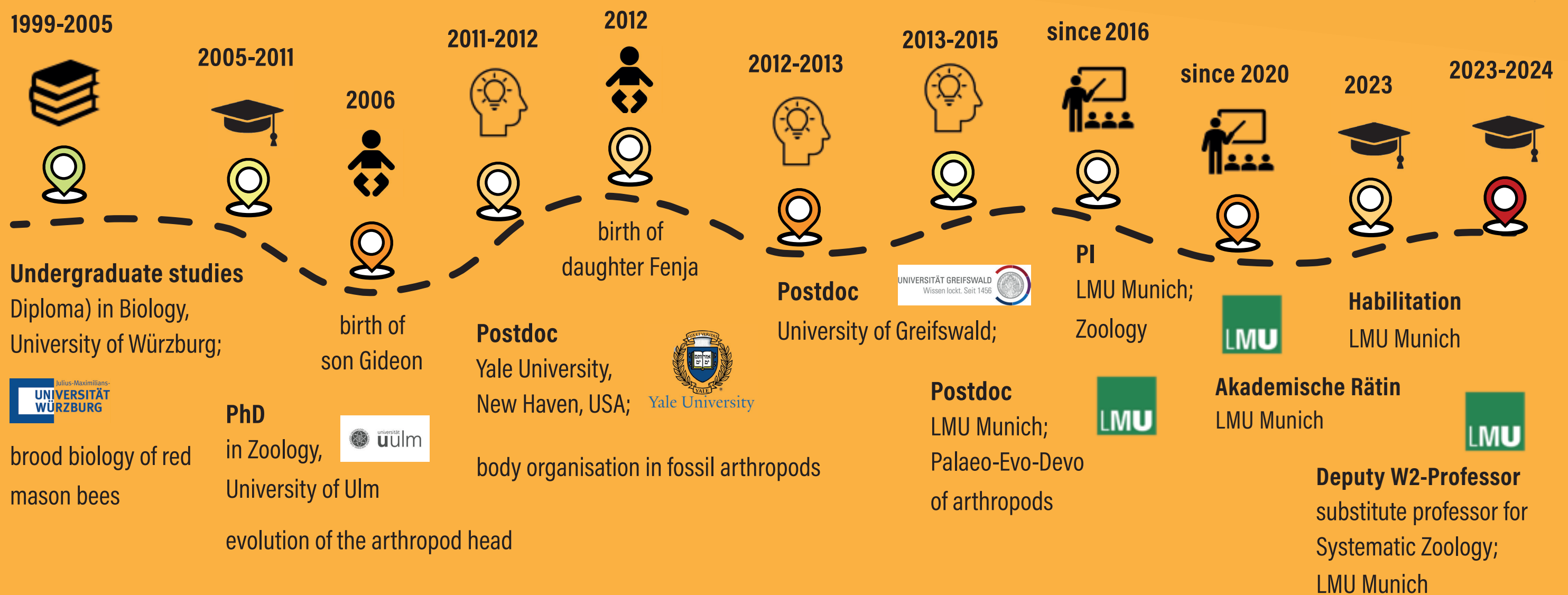
Carolin Haug is an ecologist and zoomorphologist from Germany with a strong background in evolutionary biology and palaeontology, especially of arthropods. She is an Akademische Rätin and holds a habilitation at the LMU Munich. Her main research interest is the evolution of body organisation and the convergent evolution of similar morphological structures, for which she investigates a wide array of fossil and modern arthropods. Her team uses state-of-the-art imaging methods, such as high-resolution macro-photography or digital microscopy, as well as quantitative morphology to get insights into changes of biodiversity over several hundred million years. Together with her husband Joachim, also at LMU, and her two children they form a strong team, including joint research projects.



### WHAT TO TELL STUDENTS

„Don't be afraid of the opportunities that pop up“

## CV TIMELINE



## KEY EXPERIENCE

During my time as postdoc at Yale University, my host and at that time director of the Peabody Museum, hence a man with lots of tasks on his plate, always had an open ear for every question. He even came to each of his team members personally once per week to talk about the progress, in research, but also on a personal level. He supported me ever since, helped me to develop plans for my future, and he is still a valuable collaboration partner and has become a good friend. I try to also support my students in that way.

## MAJOR SCIENTIFIC FINDING

Together with my husband and our team, I was able to quantitatively show a significant loss in diversity within neuropteran insects during the last 100 million years, based on a dataset of more than 1,000 fossil and modern specimens. This study was the first one, which could provide real numbers to this loss in contrast to previous assumptions.

