



# AI-HUB@LMU Newsletter

NEWS AND EVENTS FROM THE VARIOUS GROUPS RESEARCHING AI  
AND ITS APPLICATIONS AT LMU MUNICH

## Table of Contents

Latest Updates - December 2025

### **AI-HUB@LMU News**

[Looking back at the KI Symposium 2025](#)

[Recap: The 5th Meeting of the AI-HUB@LMU Steering Committee](#)

### **LMU AI Community News**

[relAI Symposium 2025 focuses on responsible transformation through Generative AI](#)

[MCML General Assembly 2025](#)

[Zuse Schools meeting highlights AI talent and collaboration](#)

[Three LMU professors named among Germany's Leading 30 AI Experts](#)

[Podcast: When better prediction is not always better policy](#)

Interview: Prof. Dr. Björn Ommer on the potential of AI

### **Books**

Early christianity and today's AI debates

### **Events**

AI and Conflict Lecture Series: Hospitals under fire?



## Looking back at the KI Symposium 2025

On 10 November, more than 800 registrations underscored the momentum of AI at LMU as guests filled the Große Aula for the annual KI Symposium. After welcome remarks by [Prof. Dr. Gitta Kutyniok](#) (AI-HUB@LMU spokesperson), [Prof. Dr. Julia Dittrich](#) (LMU VP for Digital Strategy), and [Dr. Christian Scharpf](#) (Head of Labor and Economic Affairs for the State Capital of Munich), [Prof. Dr. Björn Ommer](#) (LMU Chief AI Officer) delivered a keynote on the transformative power of AI. A panel with LMU Vice Presidents [Dr. Philipp Baaske](#) (VP for Entrepreneurship), [Prof. Dr. Julia Dittrich](#) (VP for Digital Strategy), and [Prof. Dr. Jochen Kuhn](#) (VP for Innovation in Education and Teacher Training), moderated by [Prof. Dr. Frauke Kreuter](#) (AI-HUB@LMU spokesperson), discussed LMU's present and future in AI.

Newly appointed professors delivered pitch talks that spanned AI in data science, medicine, biochemistry, management, and dentistry. The evening also featured the AI-HUB@LMU Prizes 2025 and LMU's AI transfer pathways, before a reception in the Lichthof capped the event.

Read the full recap with photos on the [AI-HUB@LMU website](#).



## Recap: The 5th meeting of the AI-HUB@LMU Steering Committee

We are pleased to report on the well-attended 5th meeting of our AI-HUB@LMU Steering Committee, on 5 November 2025, chaired by AI-HUB@LMU spokespersons Prof. Dr. Eyke Hüllermeier, Prof. Dr. Frauke Kreuter and Prof. Dr. Gitta Kutyniok. After a report on the status quo of the AI-HUB@LMU and welcoming a number of new faces to the steering committee, we were delighted to hear a talk by Alexander Berg-Weiß (Head, Digital Services) and Dr. Martin Spenger (Research Data Management/Team Leader, FDM Consulting) about “AI at the University Library LMU (UB) – Services, Activities, Challenges and an appeal for help”. It provided insights into the activities of UB and revealed new opportunities for cooperation.

After that, we got an update on our AI-HUB@LMU Task Forces, which had inspiring kick-off meetings since the last time the steering committee met, brought together an astonishing number of members and started to take up the work. The steering committee also discussed the future governance and structures of the AI-HUB@LMU as well as several new projects and events that are in the pipeline.

Stay tuned – we will keep you posted!





## reAI Symposium 2025 focuses on responsible transformation through Generative AI

reAI gathered researchers, students, and partners at the Haus der Bayerischen Wirtschaft to examine how generative AI can be scaled responsibly in science, industry, and society. Welcome addresses included the reAI Directors, State Secretary [Dr. Rolf Dieter Jungk](#) (State Secretary BMFTR), and the university presidents [Prof. Dr. Thomas Hofmann](#) (TUM) and [Prof. Dr. Dr. Matthias Tschöp](#) (LMU). Keynotes highlighted reliability challenges from communication networks to medical imaging and AI supported decision making. [Prof. Dr. Enkelejda Kasneci](#) (TUM Chair for Human-Centered Technologies for Learning) introduced the new reAI research area Learning & Instruction. A panel discussed innovation, safety, governance, and certification, followed by student insights and a poster session showcasing reAI research.

Read the full recap with photos on the [reAI website](#).



## MCML General Assembly 2025

The [Munich Center for Machine Learning](#) (MCML) recently held its annual General Assembly, bringing together more than 100 participants from across its community. The program opened with updates and highlights from the MCML directors, followed by an overview of the center's workshop and training activities and a recap of the "AI x Change" format.

A particular highlight of the event was the series of Flash Talks: over 30 short presentations by MCML PhD students, offering a compact and engaging overview of current research. The assembly concluded with closing remarks and a networking session.

Learn more about [MCML](#).



## Zuse Schools meeting highlights AI talent and collaboration

The [Konrad Zuse School of Excellence in reliable AI](#) (relAI) participated in the annual gathering of Germany's [Zuse Schools](#) at Technical University Darmstadt. The meeting highlighted international AI talent, strong industry connections, and lively exchanges among the schools. LMU was represented throughout the program, in particular by LMU-Director [Prof. Dr. Gitta Kutyniok](#) and relAI Fellow [Prof. Dr. Volker Tresp](#) as panel members, as well as PhD students from the relAI cohort who presented pitch talks and posters. These contributions underscored LMU's key role in shaping the next generation of responsible AI.

Read the recap on the [relAI website](#).



## Three LMU professors named among Germany's Leading 30 AI Experts

Prof. Dr. Gitta Kutyniok (AI-HUB@LMU spokesperson), Prof. Dr. Sahana Udupa (AI-HUB@LMU Steering Committee member), and Prof. Dr. Volker Tresp (LMU professor for Database Systems, Data Mining and AI) were named among the Leading 30 German AI Experts and Academics 2025, presented by the Global

Investors Forum. The nominations demonstrate LMU's wide range in AI research, from mathematical foundations and reliable, energy-efficient systems to media anthropology and responsible AI to machine learning research and transfer.

See the full list [here](#).



## Podcast: When better prediction is not always better policy

relAI PhD researcher Unai Fischer Abaigar from LMU discusses his paper "The Value of Prediction in Identifying the Worst Off" using real data from Germany's employment offices. The episode examines when governments should invest in stronger AI prediction models for targeting support and when it is more effective to broaden access and help more people even if targeting is less precise. The conversation challenges common assumptions about AI-driven decision-making and resource allocation.

Listen to the episode [here](#) and explore the [paper](#) for details.

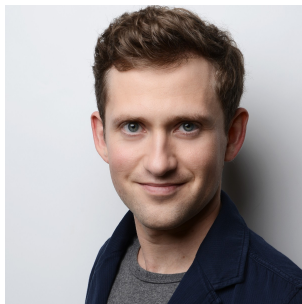


## Interview: Prof. Dr. Björn Ommer on the potential of AI

LMU's Chief AI Officer [Prof. Dr. Björn Ommer](#) outlines why the real prize in AI is not just efficiency gains but creating capabilities that were previously impossible. He argues for interdisciplinary research, more compact and targeted applications, and moving beyond the scaling race toward models that learn effectively with fewer resources. The vision is a shift from an information society to a knowledge society, with AI enabling actionable knowledge and more on device use that strengthens sovereignty and data protection.

Read the full interview on the [LMU Newsroom](#).

## Books



## Early christianity and today's AI debates

[Dr. Christoph Heilig](#) (Co-lead AI-HUB@LMU Task Force "Early Career Researchers in AI") edited the book "The First Christians in the Roman Empire" and explains why readings of Paul and early Christian state relations matter for modern societies. His research group at LMU works at the interface of literary studies, biblical studies, and artificial intelligence, where large language models are used to study how stories are told and retold across time. The project links historical interpretation with current AI narratives and questions about authority, legitimacy, and resistance in sociotechnical systems.

Read his overview and explore his broader AI focused research context [here](#).

## Events



### AI and Conflict Lecture Series: Hospitals under fire?

On 28 January 2026, 17:00 to 19:00, Ludwigstr. 33, Seminar Room 144 (hybrid), [Prof. Thomas Chadeaux](#) from Trinity College Dublin presents “Hospitals Under Fire? Causal Evidence from Satellite Imagery in Ukraine” as part of the AI and Conflict Lecture Series and asks whether hospitals in Ukraine are being deliberately targeted. He uses satellite imagery and a simple counterfactual idea to compare hospitals with similar nearby sites and estimate added risk. This approach also translates the image signals into plain language so findings are easy to interpret. The AI and Conflict Lecture Series is co-organized by [Prof. Dr. Paul Thurner](#) (Chair of Empirical Political Research and Policy Analysis) and [Prof. Dr. Göran Kauermann](#) (Chair of Applied Statistics in Social Sciences, Economics and Business).

Join the event to learn more about AI in conflict and remote sensing.

---

Thank you for a year full of inspiring ideas, meaningful collaborations, and a wonderful community. The entire AI-HUB@LMU team wishes you a peaceful Advent season, joyful holidays, and a great start to the new year. We look forward to returning in January with fresh news, events, and momentum as we head into an exciting 2026 for AI at LMU.

---

[Send us your news](#)

Ludwig-Maximilians-Universität München  
Bavarian AI Chair for Mathematical Foundations of Artificial Intelligence  
Akademiestraße 7  
80799 München  
Deutschland  
[ai-hub@lmu.de](mailto:ai-hub@lmu.de)

If you don't want to receive any more messages (to: {EMAIL}), you can [unsubscribe here](#) at any time.